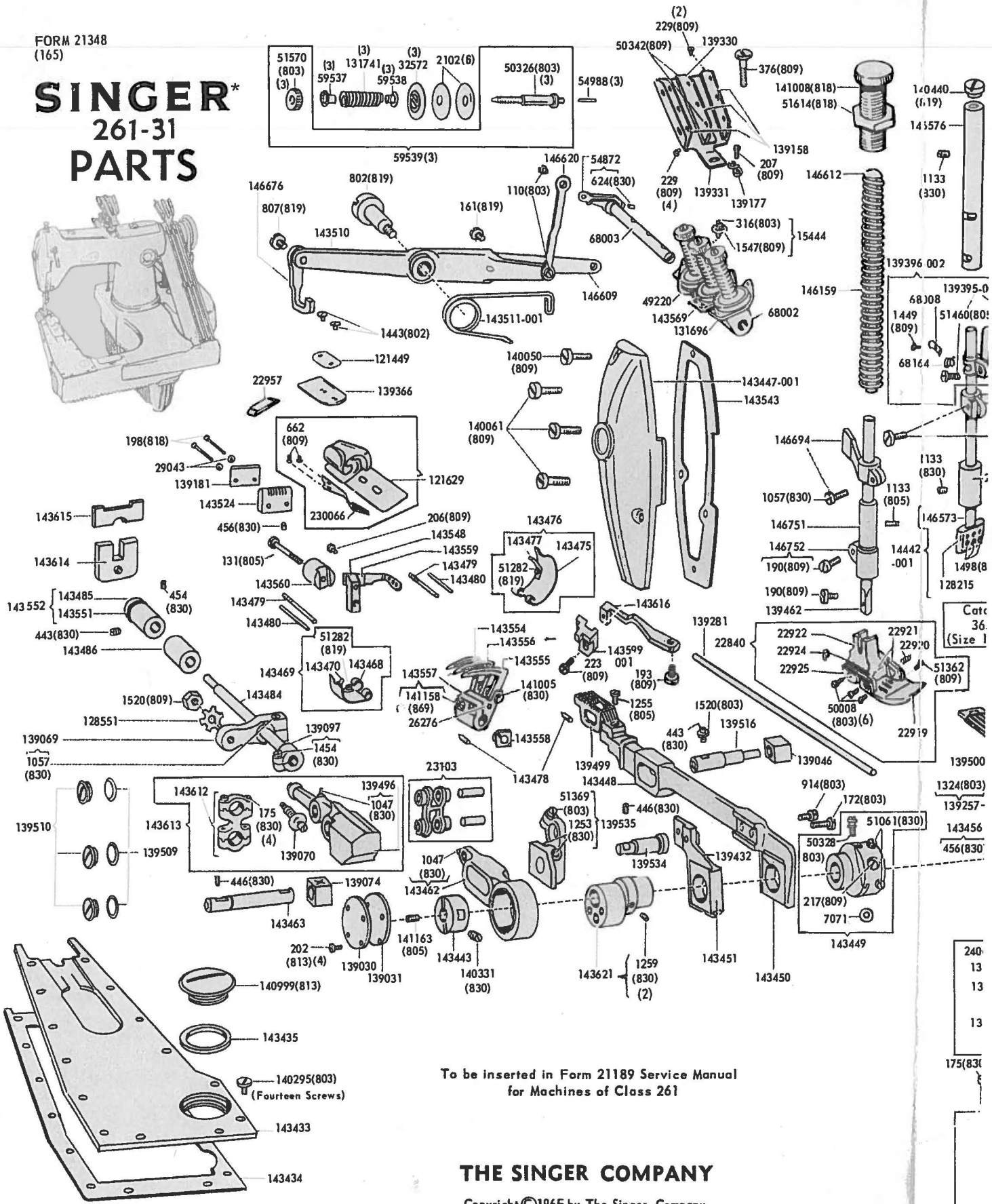
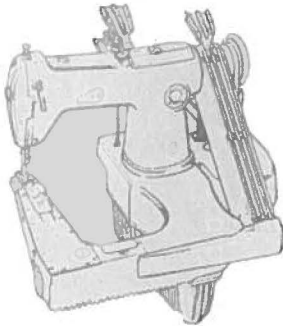


SINGER* 261-31 PARTS



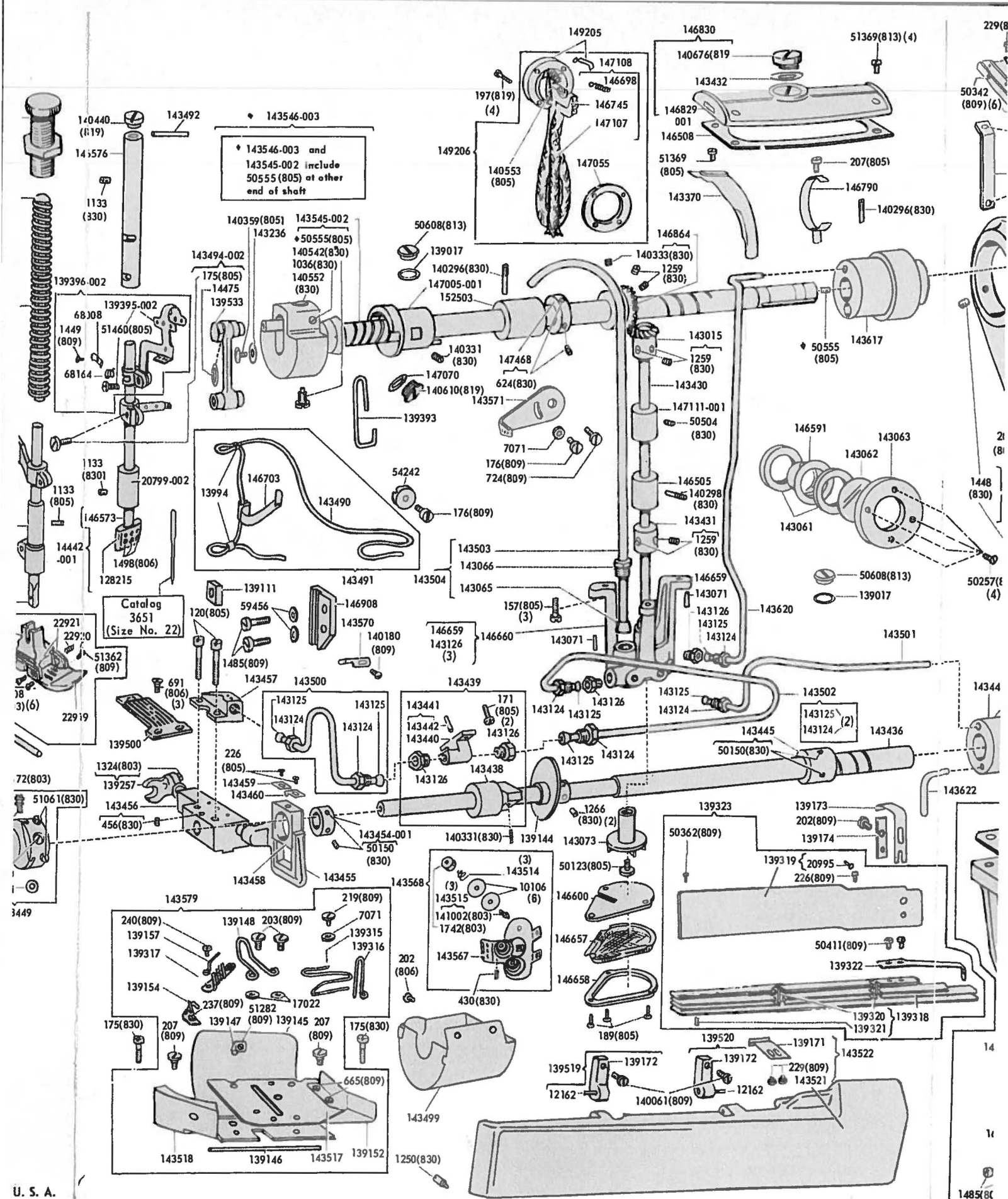
To be inserted in Form 21189 Service Manual
for Machines of Class 261

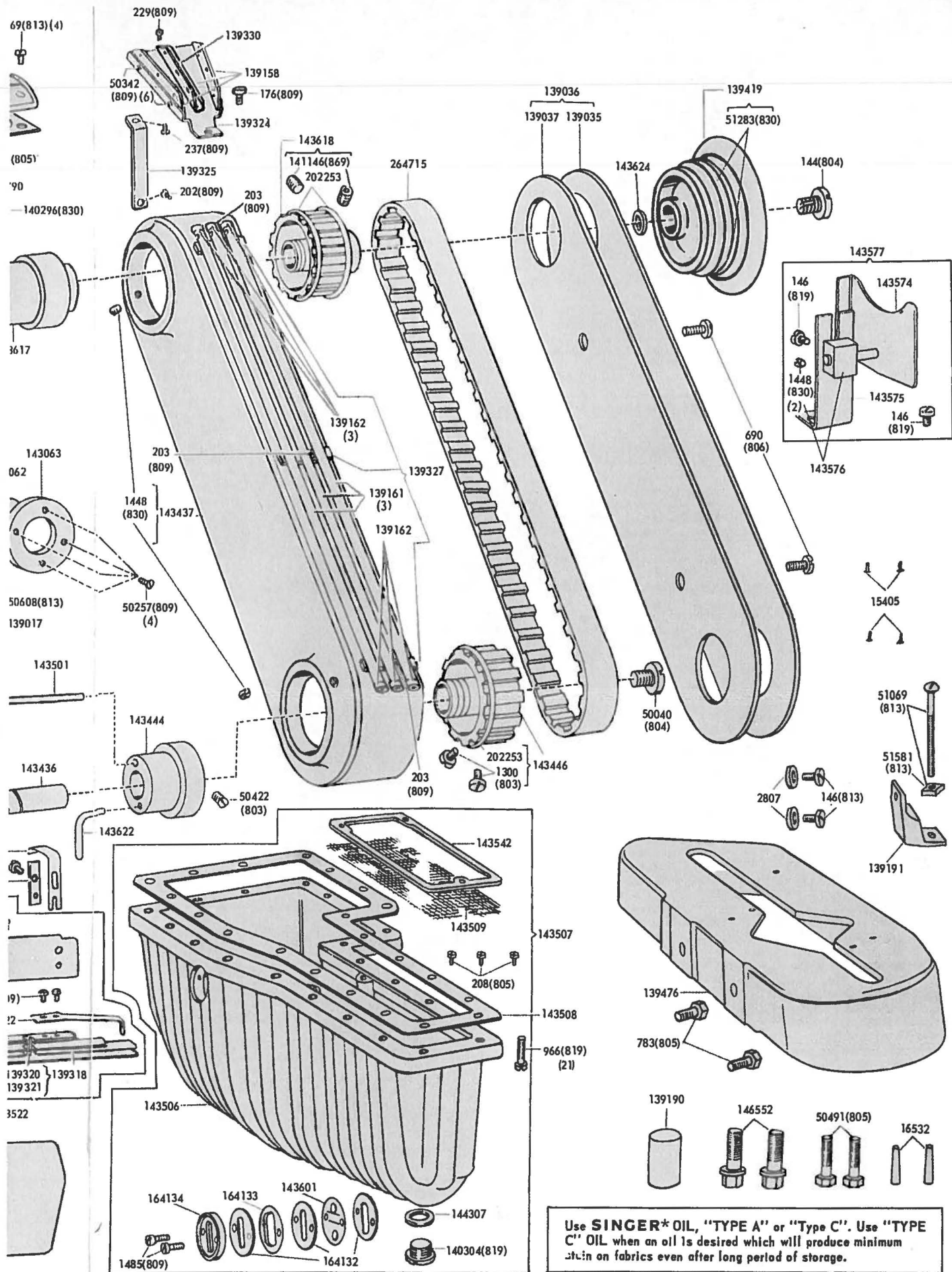
THE SINGER COMPANY

Copyright © 1965 by The Singer Company
All Rights Reserved under Inter-American Copyright Union
Copyright under International Copyright Union

Printed in U. S. A.

*A Trademark of THE SINGER COMPANY





NUMERICAL LIST OF PARTS 261-31 MACHINE

NUMBER	DESCRIPTION	NUMBER	DESCRIPTION
110(803)	Tension (needle thread) Releasing Shaft Crank Connecting Link Hinge Screw(2)	217(809)	Feed Eccentric Clamping Washer Screw
120(805)	Looper Avoiding Eccentric Forked Connection Bracket and Oil Connection Screw(2)	219(809)	Thread (looper) Take-up Thread Guide (right) Screw
131(805)	Looper Thread Guide Bracket Screw	223(809)	Needle Guard (movable) Screw
144(804)	Arm Rotary Shaft Screw (back)	226(805)	Looper Avoiding Eccentric Forked Connection Slide Block Cover Screw(2)
146(819)	Belt Guard Screw(2)	226(809)	Thread (looper) Thread Guide (front of bed) Screw (right)
146(813)	Mounting Cushion Screw	229(809)	Thread (looper) Thread Guide (intermediate) Bracket Screw(2)
157(805)	Oil Pump (Centrifugal) Body Screw (3)	229(809)	Thread (needle) Thread Guide (intermediate) Bracket Screw(2)
161(819)	Presser Bar Lifting Lever Extension Screw(2)	229(809)	Thread (looper) Thread Guide (front of bed) Cover Catch Screw(2)
171(805)	Bed Rotary Shaft Bushing (intermediate) Oil Connection Screw(2)	229(809)	Thread (needle) Thread Guide (left) Screw(2)
172(803)	Feed Lifting Eccentric Forked Connection Screw (long)	229(809)	Thread (needle) Thread Guide (right) Screw(2)
175(830)	Looper Driving Arm Connection Cap (lower) Screw(2)	237(809)	Thread (looper) Thread Guide Bracket Support Screw (upper)
175(830)	Looper Driving Arm Connection Crank (upper) Screw(2)	237(809)	Thread (looper) Take-up Thread Guide (left) Screw
175(805)	Needle Bar Connecting Stud Clamping Screw	240(809)	Thread (looper) Take-up Thread Separator Thread Retainer Screw
175(830)	Thread (looper) Take-up Stripper Plate Bracket Screw(2)	316(803)	Tension (needle thread) Releasing Shaft Stop Screw
176(809)	Slack Thread Controller Clamp Screw	376(809)	Tension (needle thread) Bracket Screw
176(809)	Thread (looper) Thread Guide Bracket Screw	430(830)	Tension (looper thread) Body Set Screw
176(809)	Thread (needle) Eyelet (side of arm) Position Screw	443(830)	Feed Bar Hinge Pin Set Screw
189(805)	Oil Pump (Centrifugal) Screen Frame Screw(3)	443(830)	Looper Holder Shaft Bushing (back) Set Screw
190(809)	Presser Bar Stop Clamping Screw	446(830)	Looper Driving Arm Hinge Stud Set Screw
190(809)	Presser Foot Screw	446(830)	Looper Eccentric Connection Slide Block Stud Set Screw
193(809)	Needle Guard (movable) Holder Screw	454(830)	Looper Holder Shaft Bushing (front) Set Screw
197(819)	Oil Removing Wick (head end) Hinge Plate and Cover Screw(4)	456(830)	Looper Eccentric Connection Slide Block Stud Set Screw
198(818)	Thread Cutter Screw(2)	456(830)	Looper Thread Guide Bracket Holder Set Screw
202(813)	Bed Rotary Shaft Bushing (left) Cover Gasket Screw(4)	624(830)	Arm Rotary Shaft Thrust Collar Set Screw(2)
202(806)	Oil and Lint Guard Screw(2)	624(830)	Tension (needle thread) Releasing Shaft Crank Set Screw
202(809)	Thread (looper) Thread Guide Bracket Support Screw (lower)	662(809)	Lap Seam Feller Spring Screw(2)
202(809)	Thread (looper) Thread Guide (front of bed) Cover Lock Spring Screw	665(809)	Thread (looper) Take-up Stripper Plate Thread Guard Screw(2)
203(809)	Thread (looper) Take-up Stripper Screw(2)	690(806)	Bed Rotary Shaft Belt Guard Cover Screw(2)
203(809)	Thread (looper) Thread Tube (belt guard) Seat Screw(3)	691(806)	Throat Plate Screw(3)
206(809)	Looper Thread Guide Screw	724(809)	Thread (needle) Eyelet (side of arm) Screw
207(805)	Arm Rotary Shaft Flanged Bushing (back) Oil Sump Tube Holder Screw	783(805)	Bed Extension Screw(2)
207(809)	Thread (looper) Take-up Stripper Plate Screw(2)	802(819)	Presser Bar Lifting Lever Hinge Screw
207(809)	Thread (needle) Eyelet Screw		
208(805)	Oil Reservoir Screen Frame Screw(3)		

NUMERICAL LIST OF PARTS 261-31 MACHINE

NUMBER	DESCRIPTION	NUMBER	DESCRIPTION
807(819)	Presser Bar Lifting Bracket Lifter Hinge Screw	2102	Tension (needle thread) Disc(6)
914(803)	Feed Lifting Eccentric Forked Connection Screw (short)	2807	Mounting Cushion Screw Washer
966(819)	Oil Reservoir Screw(21)	Catalog	
1036(830)	Needle Bar Connecting Link Hinge Stud Position Set Screw	3651	Needle (Size No. 22)
1047(830)	Looper Driving Arm Connection Link Hinge Pin Set Screw(2)	7071	Feed Eccentric Clamping Washer
1057(830)	Looper Driving Arm Connection Crank Clamping Screw	7071	Thread (looper) Take- up Thread Guide (right) Screw Washer
1057(830)	Presser Bar Lifting Bracket Clamping Screw	7071	Thread (needle) Eye- let (side of arm) Position Screw Washer
1133(830)	Needle Bar Bushing (lower) Set Screw	10106	Tension (looper thread) Disc(6)
1133(830)	Needle Bar Bushing (upper) Set Screw	12162	Thread (looper) Thread Guide (front of bed) Cover Hinge Pin(2)
1133(805)	Presser Bar Bushing (lower) Set Screw	13994	Needle Bar Bushing (lower and upper) Oil Wick Clip(2)
1250(830)	Thread (looper) Take-up Cover Position Screw Stud	14442-001	Needle Bar complete, for 1/8"-1/8" gauge 128215 and 146573
1253(830)	Looper Eccentric Connection Slide Block Stud Collar Set Screw(2)	14475	Needle Bar Connecting Link Screw Cap Disc (fiber)
1255(805)	Feed Dog Screw	15405	Number Plate Rivet(2)
1259(830)	Arm Rotary Shaft Bevel Gear Set Screw(2)	15405	Trade Mark Rivet(2)
1259(830)	Arm Shaft (upright) Bevel Gear (upper) Set Screw(2)	15444	Tension (needle thread) Releasing Shaft Stop Screw 316(803) with 1547(809)
1259(830)	Arm Shaft (upright) Collar Set Screw(2)	16532	Arm Dowel Pin(2)
1259(830)	Looper Eccentric and Feed Lifting Eccentric Set Screw(2)	17022	Thread (looper) Take- up Stripper Screw Washer(2)
1266(830)	Thread (looper) Take- up Set Screw(2)	20799-002	Needle Bar Bushing (lower)
1300(803)	Bed Rotary Shaft Sprocket Wheel Set Screw(2)	20995	Thread (looper) Thread Guide (front of bed) Cover Lock Spring Position Pin
1324(803)	Looper Avoiding Eccentric Forked Connection Crank Clamping Screw	22840	Presser Foot (triple hinged) complete, for 1/8"- 1/8" and 9/64" - 9/64" gauges, 22919, 22920, 22922, 22924, 22925, 51362(809), two 22921 and six 50008(803) Note: For 1/8"-1/8" order Code 501, for 9/64"-9/64" order Code 502
1443(802)	Lap Seam Feller Screw(2)		Note: When ordering 22840, code for gauge required must be stated
1448(830)	Belt Guard Holder Screw(2)	22919	Presser Foot Plate for 1/8"-1/8" and 9/64"-9/64" gauges Note: For 1/8"-1/8", order Code 501, for 9/64"-9/64", order Code 502
1448(830)	Bed Rotary Shaft Belt Guard Set Screw(2)		Note: When ordering 22919, code for gauge required must be stated
1449(809)	Thread (needle) Take-up Plate Spring Screw	22920	Presser Foot Plate Leveling Spring
1454(830)	Looper Holder Shaft Collar Clamping Screw	22921	Presser Foot Plate and Yielding Heel Connection(2)
1485(805)	Needle Bar Connecting Stud Slide Block Guide Screw(2)	22922	Presser Foot Shank
1485(809)	Oil Reservoir Sight Gauge Window Retainer Screw(2)	22924	Presser Foot Yielding Heel Spring
1498(806)	Needle Set Screw(3)		
1520(803)	Feed Bar Hinge Pin Set Screw Lock Nut		
1520(809)	Looper Driving Arm Ball Screw Stud Nut		
1547(809)	Tension (needle thread) Releasing Shaft Stop Screw Nut		
1742(803)	Tension (looper thread) Regulating Thumb Nut(3)		

NUMBER	DESCRIPTION	NUMBER	DESCRIPTION	NUMBER	DESCRIPTION	NUMBER	DESCRIPTION
22925	Presser Foot Yielding Heel	51369(805)	Oil Lead Screw	139036	Bed Rotary Shaft Belt Guard Cover 139035 with 139037	139315	Thread (looper) Take-up Thread Guide (right) (for one thread)
22957	Lap Seam Feller Slide Filler Plate	51460(805)	Thread (needle) Take-up Clamping Screw			139316	Thread (looper) Take-up Thread Guide (right) (for two threads)
23103	Looper Driving Arm Connecting Link and two Hinge Pins	51570(803)	Tension (needle thread) Regulating Thumb Nut(3)	139037	Bed Rotary Shaft Belt Guard Cover Gasket (cork)	139317	Thread (looper) Take-up Thread Separator
26276	Looper Position Pin	51581(813)	Mounting Cushion Bolt Nut	139046	Feed Bar Hinge Pin Slide Block	139318	Thread (looper) Thread Guide (front of bed) with 139321 and two 139320
29043	Thread Cutter Screw Washer(2)	51614(818)	Pressure Regulating Thumb Screw Nut	139069	Looper Driving Arm Connection Crank with 1057(830)	139319	Thread (looper) Thread Guide (front of bed) Plate with 20995
32572	Tension (needle thread) Releasing Disc(3)	54242	Slack Thread Controller Clamp	139070	Looper Driving Arm Connection Crank Ball Screw Stud	139320	Thread (looper) Thread Guide (front of bed) Thread Retaining Pin (long)(2)
49220	Tension (needle thread) Thread Guide (back)	54872	Tension (needle thread) Releasing Shaft Crank with 624(830)	139074	Looper Eccentric Connection Slide Block	139321	Thread (looper) Thread Guide (front of bed) Thread Retainer
50008(803)	Presser Foot Plate Hinge Screw(2)	54988	Tension (needle thread) Releasing Pin(3)	139097	Looper Holder Shaft Collar with 1454(830)	139322	Thread (looper) Thread Guide (front of bed) Thread Retainer
50008(803)	Presser Foot Plate and Yielding Heel Connection Hinge Screw (2)	59456	Needle Bar Connecting Stud Slide Block Guide Screw Washer(2)	139111	Needle Bar Connecting Stud Slide Block	139323	Thread (looper) Thread Guide (front of bed) complete 226(809), 50362(809), 139318, 139319, 139322 and two 50411(809)
50008(803)	Presser Foot Yielding Heel Hinge Screw(2)	59537	Tension (needle thread) Spring Bushing (large)(3)	139144	Thread (looper) Take-up with two 1266(830)	139324	Thread (looper) Thread Guide Bracket Thread Guide Bracket Support
50040(804)	Bed Rotary Shaft Screw (right)	59538	Tension (needle thread) Spring Bushing (small)(3)	139145	Thread (looper) Take-up Cover	139327	Thread (looper) Thread Tube (belt guard) complete, three 139161 and six 139162
50123(805)	Oil Pump (Centrifugal) Impeller Locking Screw	59539	Tension (needle thread) Screw Stud 50326(803) with 51570(803)(3)	139146	Thread (looper) Take-up Cover Hinge Pin	139330	Thread (looper) Thread Guide (intermediate) Bracket
50150(830)	Bed Rotary Shaft Bushing Flanged (right) Spacing Collar Set Screw(2)	68002	Tension (needle thread) Bracket	139147	Thread (looper) Take-up Cover Lock Spring	139331	Thread (needle) Thread Guide (intermediate) Bracket
50150(830)	Looper Avoiding Eccentric Set Screw(2)	68003	Tension (needle thread) Releasing Shaft	139148	Thread (looper) Take-up Stripper	139336	Lap Seam Feller Slide
50257(809)	Oil Flow Window Cap Screw(4)	68008	Thread (needle) Take-up Plate	139152	Thread (looper) Take-up Stripper Plate Thread Guard	139393	Slack Thread Controller
50326(803)	Tension (needle thread) Screw Stud(3)	68164	Thread (needle) Take-up Plate Spring	139154	Thread (looper) Take-up Thread Guide (left)	139395-002	Thread (needle) Take-up with 51460(805)
50328(803)	Feed Regulating Screw	121449	Lap Seam Feller Clamping Plate	139157	Thread (looper) Take-up Thread Separator Thread Retainer	139396-002	Thread (needle) Take-up complete, 1449(809), 68008, 68164 and 139395-002
50342(809)	Thread (looper) Thread Guide (intermediate) Screw(2)	121629	Lap Seam Feller on Shank with Yielding Lower Scroll with 230066 and two 662(809), for $\frac{MH}{H}$	139158	Thread (looper) Thread Guide (intermediate)	139419	Machine Pulley "V" belt groove with two 51283(830), for 3/8" "V" belt
50342(809)	Thread (looper) Thread Guide (right) Screw(2)		<u>Special H</u>	139158	Thread (looper) Thread Guide (left)	139432	Feed Lifting Eccentric Forked Connection
50342(809)	Thread (needle) Thread Guide (intermediate) Screw(2)		<u>Special H</u>	139158	Thread (needle) Thread Guide (intermediate)	139462	Presser Bar
50362(809)	Thread (looper) Thread Guide (front of bed) Screw (left)		<u>Special H</u>	139158	Thread (needle) Thread Guide (right)	139476	Bed Extension
50411(809)	Thread (looper) Thread Guide (front of bed) Thread Retainer Screw(2)		<u>Special H</u>	139158	Thread (looper) Thread Tube (belt guard)(3)	139496	Looper Driving Arm with 1047(830)
50422(803)	Bed Rotary Shaft Bushing Flanged (right) Set Screw		H, and special heavyweight materials for 3/16" to 3/8" gauges, in steps of 1/32"	139161	Thread (looper) Thread Tube (belt guard) Bushing(6)	139499	Feed Dog, 12 teeth (8 teeth to the inch) Note: When ordering 139499, state gauge required
50491(805)	Arm Screw (left)(2)		Note: When ordering 121629 weight of material and gauges of machine must be stated	139162	Thread (looper) Thread Guide (front of bed) Cover Catch		
50504(830)	Arm Shaft (upright) Bushing (upper) Set Screw	128215	Needle Clamp with three 1498(806), for 1/8"-1/8" and 9/64"-9/64" gauges	139171	Thread (looper) Thread Guide (front of bed) Cover Lock Spring		
50555(805)	Arm Rotary Shaft Plug Screw		Note: When ordering 128215, state gauge required	139172	Thread (looper) Thread Guide (front of bed) Cover Hinge Plate(2)		
50608(813)	Bed Oil Plug Screw	128551	Looper Driving Arm Ball Screw Stud Nut	139173	Thread (looper) Thread Guide (front of bed) Cover Lock Spring		
50608(813)	Arm Hole Plug Screw		Lock Washer	139174	Thread (looper) Thread Guide (front of bed) Cover Lock Spring Reinforcing Plate		
51061(830)	Feed Eccentric Body Set Screw(2)	131696	Tension (needle thread) Thread Guide (front)	139177	Thread (needle) Eyelet		
51069(813)	Mounting Cushion Bolt with 51581(813)	131741	Tension (needle thread) Spring (3)	139181	Thread Cutter (knife)		
51282(819)	Looper Gate (left) Lock Spring Screw	139017	Bed Oil Plug Screw Washer	139190	Machine Cushion		
51282(819)	Looper Gate (right) Lock Spring Screw	139017	Arm Hole Plug Screw Washer	139191	Mounting Cushion		
51282(809)	Thread (looper) Take-up Cover Lock Spring Screw	139030	Bed Rotary Shaft Bushing (left) Cover	139257	Looper Avoiding Eccentric Forked Connection Crank (forked) with 1324(803)		
51283(830)	Machine Pulley Set Screw(2)	139031	Bed Rotary Shaft Bushing (left) Cover Gasket	139281	Thread (looper) Thread Tube (side of bed)		
51362(809)	Presser Foot Plate Leveling Spring Screw	139035	Bed Rotary Shaft Belt Guard Cover				
51369(813)	Arm Top Cover Screw(4)						
51369(803)	Looper Driving Arm Hinge Stud Clamping Screw						

NUMBER	DESCRIPTION	NUMBER	DESCRIPTION	NUMBER	DESCRIPTION	NUMBER	DESCRIPTION
139500	Throat Plate for 1/8"-1/8" and 9/64"-9/64" gauges, for use with 22840 and 139499 Note: When ordering 139500 state gauge required	140440(819)	Needle Bar Bushing (upper) Oil Plug Screw	143442	Bed Rotary Shaft Bushing (intermediate) Oil Connection Oil Tube	143486	Looper Holder Shaft Bushing (front)
139509	Feed Bar Hinge Pin (eccentric) Gasket	140542(830)	Needle Bar Crank Position Screw	143443	Bed Rotary Shaft Bushing (left)	143490	Needle Bar Bushing (lower and upper) Oil Wick
139509	Looper Driving Arm Hinge Stud Gasket	140552(830)	Needle Bar Connecting Link Hinge Stud Clamping Screw	143444	Bed Rotary Shaft Bushing Flanged (right) with plug	143491	Needle Bar Bushing (lower and upper) Oil Wick complete, 143490, 146703 and two 13994
139509	Looper Eccentric Connection Slide Block Stud Gasket	140553(805)	Oil Removing Wick (head end) Holder Body Hinge Screw	143445	Bed Rotary Shaft Bushing Flanged (right) Spacing Collar with two 50150(830)	143492	Needle Bar Bushing (lower and upper) Oil Wick Guide Tube (Arm)
139510	Feed Bar Hinge Pin (eccentric) Oil Plug	140610(819)	Arm Hole Plug Screw	143446	Bed Rotary Shaft Sprocket Wheel with 202253 and two 1300(803)	143494-002	Needle Bar Connecting Link, Connecting Stud and Hinge Stud with 14475 and 139533
139510	Looper Driving Arm Hinge Stud Oil Plug	140676(819)	Arm Top Cover Plug Screw	143447-001	Face Plate with medallion	143499	Oil and Lint Guard
139510	Looper Eccentric Connection Slide Block Stud Oil Plug	140999(813)	Bed Cover Hole Plug Screw	143448	Feed Bar	143500	Oil Pipe and two each 143124 and 143125
139516	Feed Bar Hinge Pin (eccentric)	141002(803)	Tension (looper thread) Screw Stud(3)	143449	Feed Eccentric (adjustable) complete 217(809), 7071, 50328(803), and two 51061(830)	143501	Oil Pipe with 143124 and 143125
139519	Thread (looper) Thread Guide (front of bed) Cover Hinge Plate (left) 139172 with 12162	141005(830)	Looper Clamping Screw	143450	Feed Eccentric Slide Block	143502	Oil Pipe with two each 143124 and 143125
139520	Thread (looper) Thread Guide (front of bed) Cover Hinge Plate (right) 139172 with 12162	141008(818)	Pressure Regulating Thumb Screw	143451	Feed Lifting Eccentric Forked Connection Slide Block	143503	Oil Pipe for 143504
139533	Needle Bar Connecting Link Screw Cap	141146(869)	Arm Rotary Shaft Sprocket Wheel Set Screw(2)	143454-001	Looper Avoiding Eccentric with two 50150(830)	143504	Oil Pipe complete, 143503 with 143065 and 143066 (for Agents only)
139534	Looper Driving Arm Hinge Stud	141158(869)	Looper Holder Clamping Screw	143455	Looper Avoiding Eccentric Forked Connection	143506	Oil Reservoir
139535	Looper Eccentric Connection Slide Block Stud Collar and Looper Driving Arm Hinge Stud Support with 51369(803) and two 1253(830)	141163(805)	Bed Rotary Shaft Screw (left)	143456	Looper Avoiding Eccentric Forked Connection Bracket with 456(830)	143507	Oil Reservoir complete 140304(819), 143506, 143509, 143542, 143601, 144307, 16413: 164134, two 1485(809) and three each 208(805) and 164132
140050(809)	Face Plate Screw (upper)	143015	Arm Shaft (upright) Bevel Gear (upper) left hand spiral with two 1259(830)	143457	Looper Avoiding Eccentric Forked Connection Bracket	143508	Oil Reservoir Gasket
140061(809)	Face Plate Screw (lower)(3)	143061	Oil Flow Body Gasket(2)	143458	Looper Avoiding Eccentric Forked Connection Slide Block	143509	Oil Reservoir Screen
140061(809)	Thread (looper) Thread Guide (front of bed) Cover Hinge Plate Screw(2)	143062	Oil Flow Window	143459	Looper Avoiding Eccentric Forked Connection Slide Block	143510	Presser Bar Lifting Lever
140180(809)	Thread Guide (front of arm) Screw	143063	Oil Flow Window Cap	143460	Looper Avoiding Eccentric Forked Connection Slide Block Cover (back)	143511-001	Presser Bar Lifting Lever Spring
140295(803)	Bed Cover Screw(14)	143065	Oil Pipe Clamping Sleeve	143462	Looper Eccentric Connection with bushing and 1047(830)	143514	Tension (looper thread) Spring(3)
140296(830)	Arm Rotary Shaft Bushing (center) Set Screw	143066	Oil Pipe Clamping Sleeve Nut	143463	Looper Eccentric Connection Slide Block Stud	143515	Tension (looper thread) Screw Stud 141002(803) with 1742(803)(3)
140296(830)	Arm Rotary Shaft Flanged Bushing (back) Set Screw	143071	Oil Pump (Centrifugal) Body Position Pin(2)	143468	Looper Gate (left)	143517	Thread (looper) Take-up Stripper Plate
140298(830)	Arm Shaft (upright) Bushing (lower) Set Screw	143073	Oil Pump (Centrifugal) Impeller	143469	Looper Gate (left) 143468 with 143470 and 51282(819)	143518	Thread (looper) Take-up Stripper Plate Bracket
140304(819)	Oil Reservoir Drain Plug	143124	Oil Pipe Clamping Sleeve(6)	143470	Looper Gate (right) Lock Spring	143521	Thread (looper) Thread Guide (front of bed) Cover
140331(830)	Arm Rotary Shaft Flanged Bushing (front) Set Screw	143125	Oil Pipe Clamping Sleeve Nut(6)	143475	Looper Gate (right) Looper Gate (right) 143475 with 143477 and 51282(819)	143522	Thread (looper) Thread Guide (front of bed) Cover 143521 with 139171 and two 229(809)
140331(830)	Bed Rotary Shaft Bushing (intermediate) Set Screw	143126	Oil Pipe Clamping Sleeve Adaptor(5)	143476	Looper Gate (right) Looper Gate (right) 143475 with 143477 and 51282(819)	143524	Thread Cutter Support and Thread Guide
140331(830)	Bed Rotary Shaft Bushing (left) Set Screw	143236	Arm Rotary Shaft Screw Plug (front) Washer (fiber)	143477	Looper Gate (right) Lock Spring	143542	Oil Reservoir Screen Frame
140333(830)	Arm Rotary Shaft Bevel Gear Position Screw	143370	Oil Lead	143478	Looper Gate Hinge Pin(2)	143543	Face Plate Gasket
140359(805)	Arm Rotary Shaft Screw Plug (front)	143430	Arm Shaft (upright)	143479	Looper Gate Hinge Screw Stud(2)	143545-002	Arm Rotary Shaft with 1036(830), 140542(830)
		143431	Arm Shaft (upright) Collar with two 1259(830)	143480	Looper Gate Position Pin(2)	143546-003	50555(803) and crank Arm Rotary Shaft 143545-002 with 140359(805), 143236 and 143494-002
		143432	Arm Top Cover Plug Screw Gasket	143484	Looper Holder Shaft	143548	Looper Thread Guide Bracket
		143433	Bed Cover with insert and reinforcing Plate	143485	Looper Holder Shaft Bushing (back)	143551	Looper Holder Shaft Bushing (back) Oil Seal (rubber)
		143434	Bed Cover Gasket (cork)			143552	Looper Holder Shaft Bushing (back) 143485 with 143551
		143435	Bed Cover Hole Plug Screw Gasket				
		143436	Bed Rotary Shaft				
		143437	Bed Rotary Shaft Belt Guard with two 1448(830)				
		143438	Bed Rotary Shaft Bushing (intermediate)				
		143439	Bed Rotary Shaft Bushing (intermediate) 143438 with 143441 and two each 171(805) and 143126				
		143440	Bed Rotary Shaft Bushing (intermediate) Oil Connection				
		143441	Bed Rotary Shaft Bushing (intermediate) Oil Connection 143440 with 143442				

NUMBER	DESCRIPTION	NUMBER	DESCRIPTION	NUMBER	DESCRIPTION
143554	Looper (back) for 3/64"-3/64" to 9/64"-9/64" gauges Note: When ordering 143554, state gauge required	143621	Looper Eccentric and Feed Lifting Eccentric with two 1259(830)	147108	Oil Removing Wick (head end) Holder Body 146745 with 146698 and 147107 (for Agents only)
143555	Looper (front) for 3/64"-3/64" to 9/64"-9/64" gauges Note: When ordering 143555, state gauge required	143622	Oil Return Tube	147111-001	Arm Shaft (upright) Bushing (upper)
143556	Looper (intermediate)	143624	Arm Rotary Shaft Sprocket Wheel Oil Retaining Ring	147468	Arm Rotary Shaft Thrust Collar with two 624(830)
143557	Looper Holder with 26276 and 141158(869)	144307	Oil Reservoir Drain Plug Gasket	149205	Oil Removing Wick (head end) Hinge Plate, Stop, Spring Clip and Cover
143558	Looper Holder Bushing (eccentric)	146159	Presser Bar Spring	149206	Oil Removing Wick (head end) Holder Body complete, 140553(805), 146698, 146745, 147055, 147107 and 149205
143559	Looper Thread Guide	146505	Arm Shaft (upright) Bushing (lower)	152503	Arm Rotary Shaft Bushing (center)
143560	Looper Thread Guide Bracket Holder	146508	Arm Top Cover Gasket	164132	Oil Reservoir Sight Gauge Background Disc Gasket
143567	Tension (looper thread) Body	146552	Arm Screw (right)(2)	164132	Oil Reservoir Sight Gauge Window Gasket
143568	Tension (looper thread) complete, 143567, three each 143514, 143515 and six 10106	146573	Needle Bar (hollow)	164132	Oil Reservoir Sight Gauge Window Retainer Gasket
143569	Tension (needle thread) Thread Guide (center)	146576	Needle Bar Bushing (upper)	164133	Oil Reservoir Sight Gauge Window
143570	Thread Guide (front of arm)	146591	Oil Flow Body	164134	Oil Reservoir Sight Gauge Window Retainer
143571	Thread (needle) Eyelet (side of arm)	146600	Oil Pump (Centrifugal) Cover	202253	Arm Rotary Shaft Sprocket Wheel Spring Flange(2)
143574	Belt Guard (small)	146609	Presser Bar Lifting Lever Extension	202253	Bed Rotary Shaft Sprocket Wheel Spring Flange
143575	Belt Guard Bracket	146612	Presser Bar Spring Guide Pin	230066	Lap Seam Feller Spring
143576	Belt Guard Holder with two 1448(830)	146620	Tension (needle thread) Releasing Shaft Crank Connecting Link	264715	Bed Rotary Shaft Belt
143577	Belt Guard complete, with 143574, 143575, 143576 and two 146(819)	146657	Oil Pump (Centrifugal) Screen		
143579	Thread (looper) Take-up Stripper Plate Bracket 143518 with 219(809), 237(809), 240(809), 7071, 51282(809), 139145, 139146, 139147, 139148, 139152, 139154, 139157, 139315, 139316, 139317, 143517, two each 203(809), 207(809), 665(809) and 17022	146658	Oil Pump (Centrifugal) Screen Frame		
143599-001	Needle Guard (movable)	146659	Oil Pump (Centrifugal) Body		
143601	Oil Reservoir Sight Gauge Background Disc	146660	Oil Pump (Centrifugal) Body 146659 with three 143126		
143612	Looper Driving Arm Connection with four 175(830) (for Agents only)	146676	Presser Bar Lifting Bracket Lifter		
143613	Looper Driving Arm 139496 and connection with 139070 and four 175(830) (for Agents only)	146694	Presser Bar Lifting Bracket with 1057(830)		
143614	Bed Oil Shield (felt, lower)	146698	Oil Removing Wick (head end) Holder Body Spring		
143615	Bed Oil Shield (felt, upper)	146703	Needle Bar Bushing (lower and upper) Oil Wick Clamp and Retainer		
143616	Needle Guard (movable) Holder	146745	Oil Removing Wick (head end) Holder Body		
143617	Arm Rotary Shaft Flanged Bushing (back)	146751	Presser Bar Bushing (lower)		
143618	Arm Rotary Shaft Sprocket Wheel and Hub with two each 141146(869) and 202253	146752	Presser Bar Stop with 190(809)		
143620	Oil Pipe with 143124 and 143125	146790	Arm Rotary Shaft Flanged Bushing (back) Oil Sump Tube with holder		
		146829-001	Arm Top Cover		
		146830	Arm Top Cover 146829-001 with 140676(819) and 143432		
		146864	Arm Rotary Shaft Bevel Gear, right hand spiral with 140333(830) and two 1259(830)		
		146908	Needle Bar Connecting Stud Slide Block Guide		
		147005-001	Arm Rotary Shaft Flanged Bushing (front) with drain tube		
		147055	Oil Removing Wick (head end) Hinge Plate and Cover Gasket		
		147070	Arm Hole Plug Screw Washer		
		147107	Oil Removing Wick (head end)		